

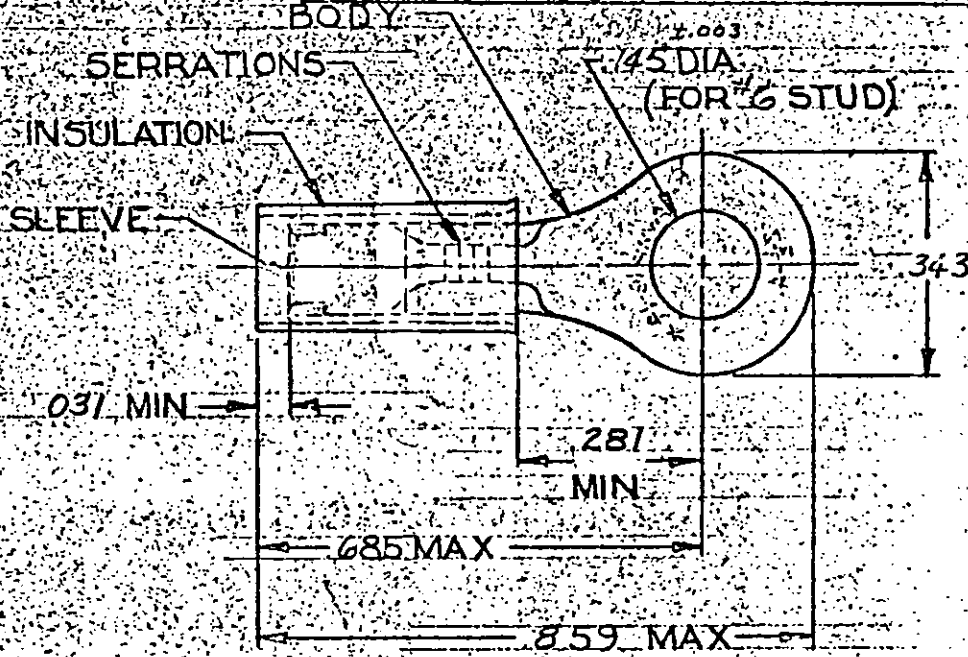
DRAWING MADE IN AMERICAN PROJECTION

LOC 14 G  
PRINT DIST G

© 1968 BY AMP INCORPORATED. ALL RIGHTS RESERVED. AMP PRODUCTS COVERED BY PATENTS AND/OR PATENTS PENDING.


REVISIONS

LTR	DESCRIPTION	DATE	APPROVED
H	REY/0720-0043-93	10 3-10-93	MLC
E	REVISED TO F-621	7R 7-23-73	WMC
F	OBS. - 2 G-2588	BT 10-12-87	PMF
G	REACT 2-2 G-4619	JT 2-25-88	MM



FOR .105 TO .150 WIRE INSULATION DIA.  
TONGUE MATERIAL THK = .031 ± .002

NOTE: STAMPING MAY BE ON TOP OR BOTTOM.

100	LOOSE PC 30X	8-36157-1	
1	36157 ON TAPE	2-36157-2	BODY & SLEEVE COPPER (QQ-C-576) TIN PL (MIL-T-10727)
1	1 WIRE TERMINAL	36157	INSULATION: BLUE NYLON (MIL-M-20693) TYPE I
QTY	DESCRIPTION	PART NO.	MATERIAL FINISH
UNLESS OTHERWISE SPECIFIED DIMENSIONS ARE IN INCHES. TOLERANCES: ON DECIMALS ± .008. ANGLES 5°.		CONTRACT NO. _____	 AMP INCORPORATED HARRISBURG, PENNSYLVANIA
MATERIAL		DR. <i>J. J. Enright</i> 3-11-69	
SEE TABLE		CHK. <i>J. J. Walz</i> 3-14-69	NAME WIRE TERMINAL
		APPD. <i>Swabel</i> 4-7-69	P.T.D.G.-RING TONGUE
		REL.	WIRE SIZE 16-14
		DSGN APPD.	SIZE CODE IDENT NO. NUMBER
		OTHER APPD.	A 00779 36157
			SCALE(S) CUSTOMER DRAWING(S)